

**5th European Conference on
Sustainable Urban Mobility Plans**
14-15 MAY 2018 | NICOSIA, CYPRUS



**Evaluating SUMPS: Monitoring, impact
assessment, benchmarking and indicators**

Evaluating SUMP development in the CIVITAS context

Dirk Engels | CIVITAS SATELLITE





1. Objectives of the CIVITAS 2020 programme

- To **test and demonstrate** an integrated package of measures (part of a consistent mobility policy in a city) to come to innovative sustainable solutions for cleaner and better urban transport and mobility (the focus of the **Innovation Actions**)
- To **develop and validate** a mobility measure (or maybe a set of measures) to come to innovative sustainable solutions for cleaner and better urban transport and mobility (the focus of the **Research and Innovation Actions**)

What is a measure in the CIVITAS context?

A measure is a **mobility related action** implemented by a city (by the government or other stakeholders) e.g.:

- New infrastructure
- A new service
- A new organization of the way to work
- Activities to change awareness, acceptance or attitude and behavior of citizens or visitors



THE CIVITAS INITIATIVE
IS CO-FINANCED BY THE
EUROPEAN UNION



2. The CIVITAS 2020 Evaluation

Important concerns

- **Making the evaluation findings understandable** in a consistent way for other experts, policy makers and stakeholders
 - What was implemented?
 - In which context?
 - What can we really learn from it for our own planning and decisions?

CIVITAS Approach

- **Structuring** the evaluation work in a consistent way
- Using the **same wordings** for the same aspects
- **Clear methods** for data collection

2. The CIVITAS 2020 Evaluation

MEASURE EVALUATION

- What is the **benefit** of a implementing a measure for a city (or its stakeholders) as part of a sustainable policy?
- **What are the negative and positive impacts in the 6 CIVITAS impact categories?**
- What is the **impact** of a measure or an integrated package of measures?
- What are the important elements in the implementation of the measure (**process evaluation**: also barriers and drivers)?
- How does the measure **interact** with other measures?
- ...

PROJECT EVALUATION

- Did the project delivered the **promised outputs**?
- What is the effect of the project on the roll-out of a mobility strategy?
 - *e.g. more cities to develop a SUMP*
- What is the **effect of specific activities** in the project?
- What is the effect of the project on the take-up of the measures?

2. The CIVITAS 2020 Evaluation

Focus of the CIVITAS 2020 Evaluation

MEASURE EVALUATION

- What is the **benefit** of a implementing a measure for a city (or its stakeholders) as part of a sustainable policy?
- **What are the negative and positive impacts in the 6 CIVITAS impact categories?**
- What is the **impact** of a measure or an integrated package of measures?
- What are the important elements in the implementation of the measure (**process evaluation**: also barriers and drivers)?
- How does the measure **interact** with other measures?
- ...

PROJECT EVALUATION

- Did the project delivered the **promised outputs**?
- What is the effect of the project on the roll-out of a mobility strategy?
 - *e.g. more cities to develop a SUMP*
- What is the **effect of specific activities** in the project?
- What is the effect of the project on the take-up of the measures?



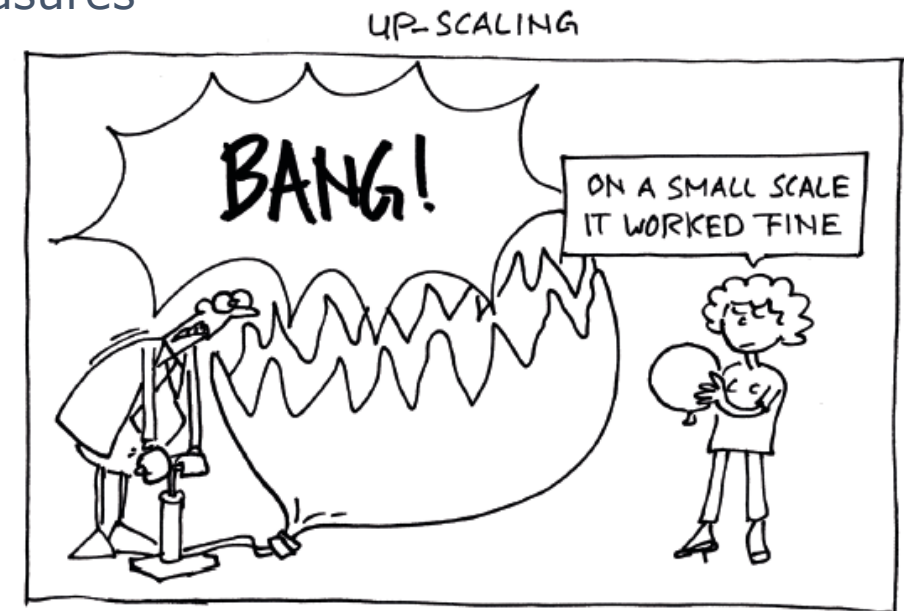
3. The core of the CIVITAS 2020 Measure Evaluation

Objectives of the CIVITAS 2020 Measure Evaluation

- **Understand** the process and impact of these mobility measures
- **Learn** what works, what does not
- And the **reasons** for this



- **Optimising** the measures
- **Upscaling** the measures in the city
- **Take-up** the measures by other cities (transferability)

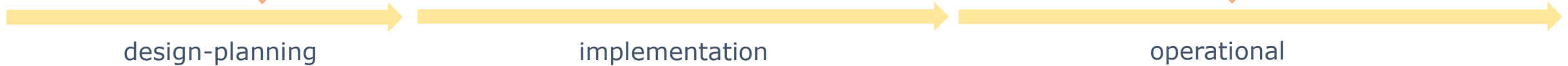


3. The core of the CIVITAS 2020 Measure Evaluation

before



after



IMPACT evaluation

- Before and after measurements.
- What is the impact of a measure or an integrated package of measures in the 6 CIVITAS Impact categories?

- CIVITAS IMPACT CATEGORIES**
- People-society
 - People-governance
 - Transport system
 - Energy
 - Economy
 - Environment

PROCESS evaluation

- How was the measure implemented?
- Barriers and drivers in the implementation of the measure?
- What was the effect of specific activities in the implementation of the measure?
 - To facilitate the implementation?
 - To increase the envisaged impact?
 - To avoid/reduces not-wanted impacts?
- Understanding of the **impact**? Why? What are key elements in it?

3. The core of CIVITAS 2020 Measure Evaluation

IMPACT EVALUATION

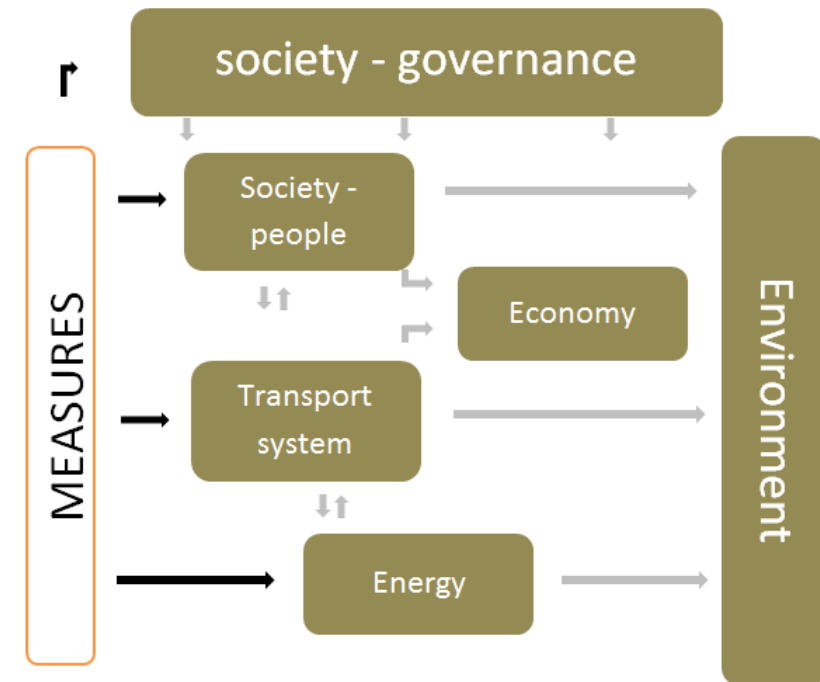
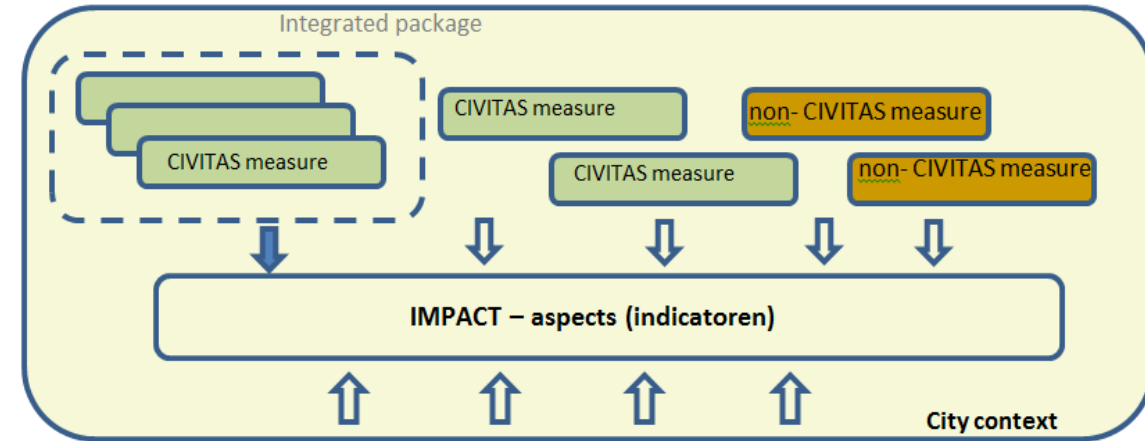
Clear identification of the measures tested, demonstrated, developed and validated

For each measure, define:

- **Objectives:** what do we want/hope to achieve?
- **Quantifiable targets:** objectives in figures
- **Output:** immediate result (e.g. new buses, the SUMP)
- **Expected impacts (outcomes):**
 - Envisaged impacts (see objectives)
 - Possible additional impacts (including negative undesirable impacts)

Structuring the impacts

- Impact **categories** and **sub-categories**
- **Aspects:** which effect we want to measure
- **Indicator:** which indicators we want to use to compare the before and after status of the analysed aspect?



3. The core of CIVITAS 2020 Measure Evaluation

PROCESS EVALUATION

Objectives

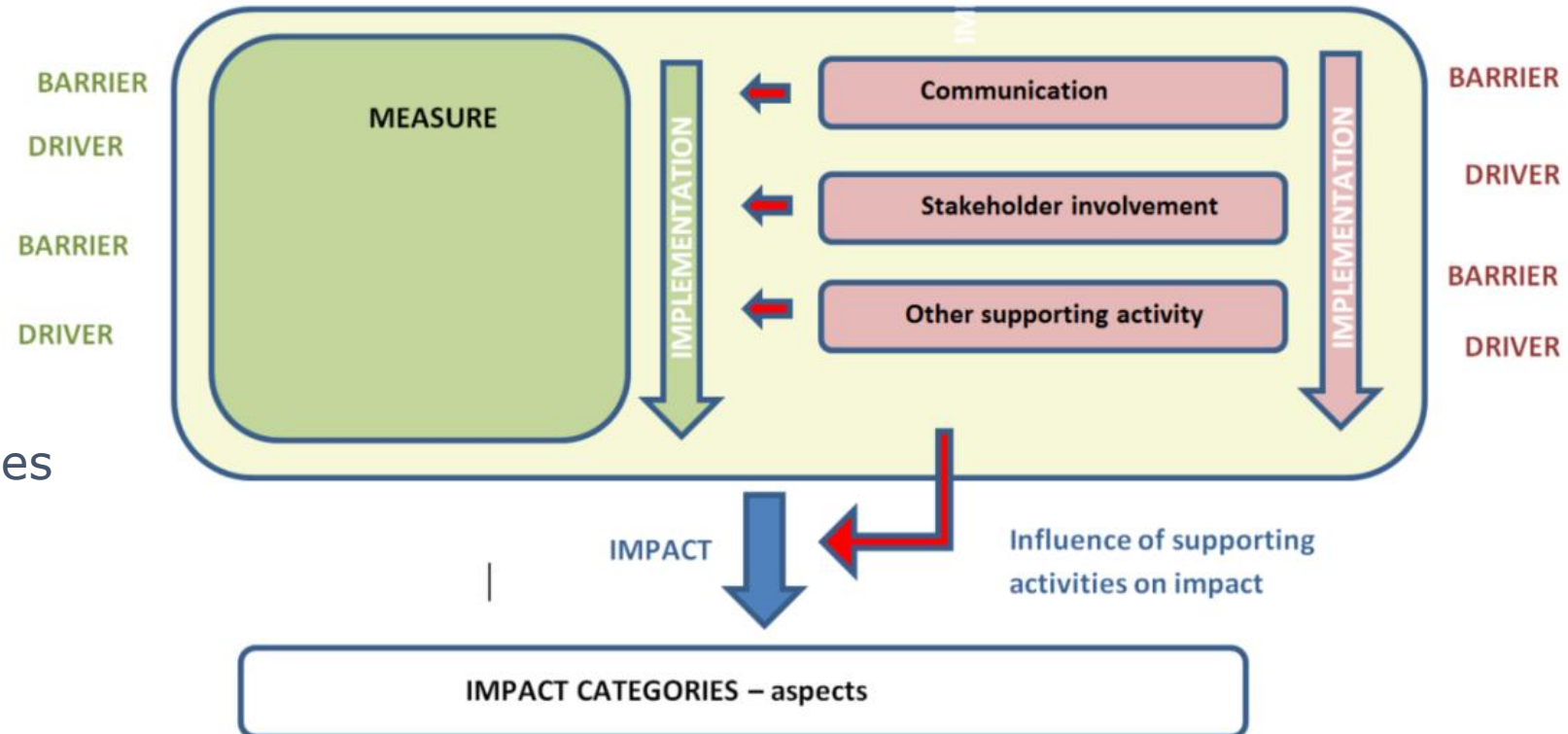
- **Evaluation of the processes** of planning, implementation and operation, aiming to understand
 - why measures have succeeded or failed,
 - understanding the roles of supporting activities e.g. information, communication and participation (citizen engagement, stakeholder involvement)
- **Validation of the impact** of the measures
 - Correct interpretation of the impact indicators
 - Understanding the importance of sub-measures in the overall impact of measures
 - Understanding the importance and influence (on the impact) of supporting activities



3. The core of CIVITAS 2020 Measure Evaluation

PROCESS EVALUATION

- **Understanding the implementation process**
 - Understanding the implementation process
 - Partners and roles
 - Barriers and drivers
 - Effect of supporting activities



- **Drawing well-motivated conclusions** on the measures in a complex urban environment

3. The core of CIVITAS 2020 Measure Evaluation

PROCESS EVALUATION – understanding the story behind the figures

- **Activities for information gathering on measure level**

- Info from SC and ML
- Stakeholder survey
- Stakeholder interview
- User survey
- Focus group meeting
- Learning history session
- Expert (validation) meeting

- **Activities for information gathering on wider level**

- Focus group meeting on an integrated package of measures
- Learning history session on a type of measure
- Workshop on key measures

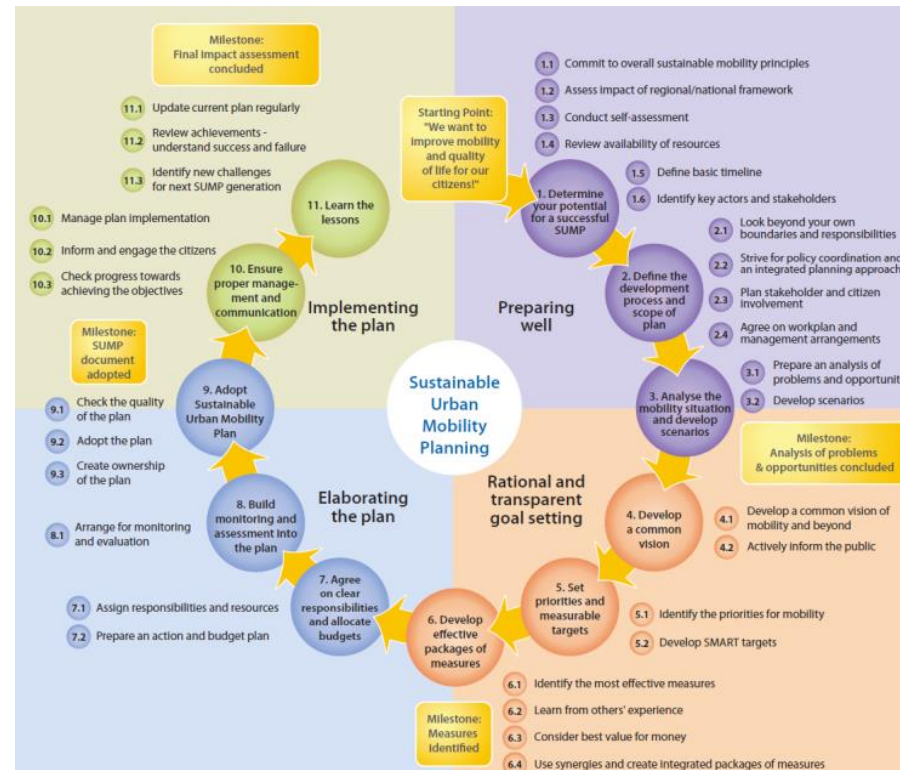


LEARNING HISTORY

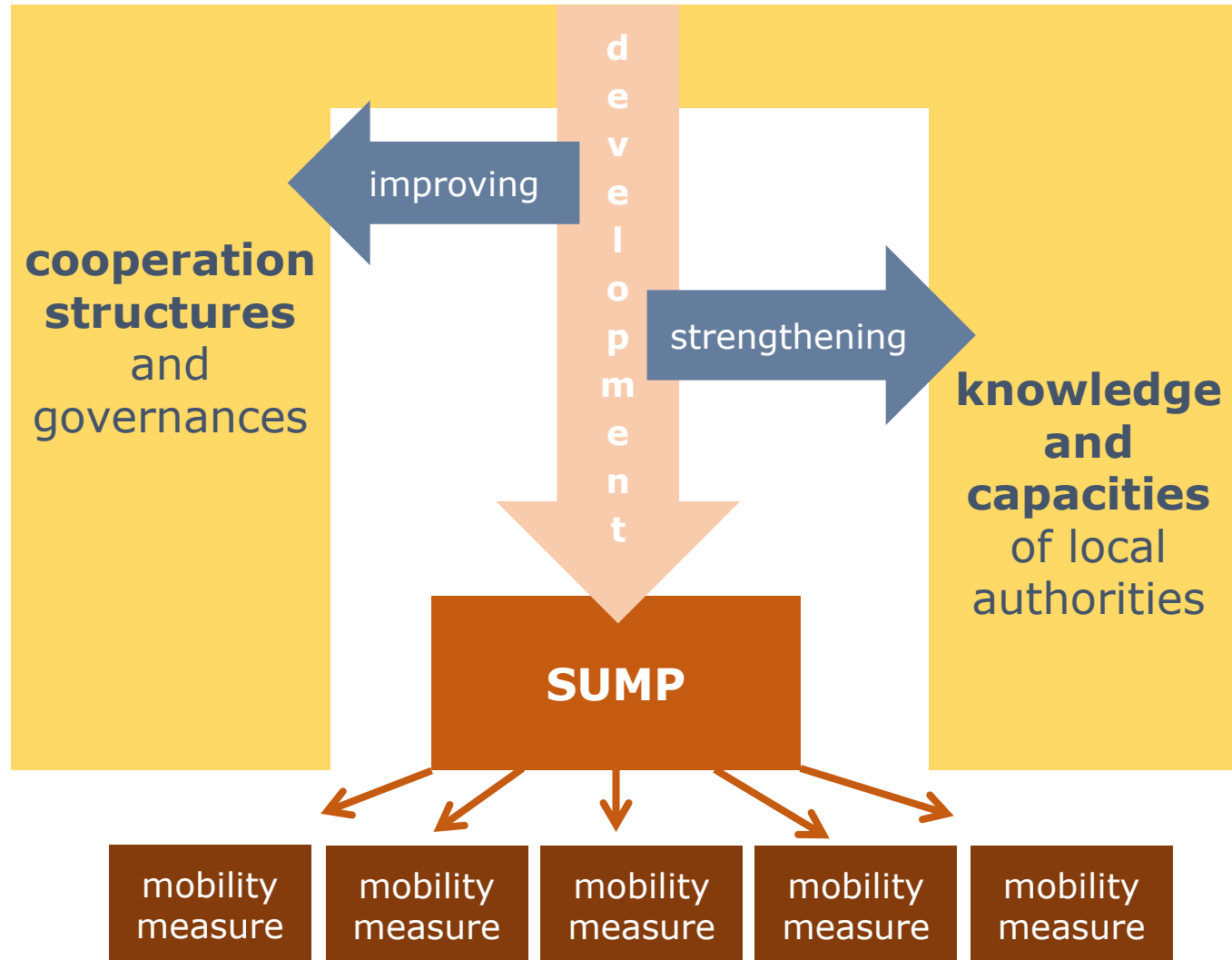




4. Evaluation of SUMP related activities



4. Evaluation of SUMP related activities



4. Evaluation of SUMP related activities

Measures

- **Development of a SUMP**
- **Strengthening the knowledge and capacities of local authorities**
allowing them to make a better SUMP ...
- **Improving the cooperation structures and governance**
allowing to design and implement transport measures in a better way

4. Evaluation of SUMP related activities

Development of a SUMP

Objectives:

- making a better mobility plan
- improving the transport planning
- defining better (more integrated) effective measures

Output: a good SUMP

- What is a good SUMP?
 - EU ELTIS guidelines
 - Local guidelines
- Assessing the quality of the SUMP
 - Is the SUMP developed with the right steps
 - Are all crucial areas covered in the plan
 - Does the document reflects all agreements and proposed strategies and measures in a clear way?

4. Evaluation of SUMP related activities

Development of a SUMP

Output: a good SUMP: Assessing the quality of the SUMP

Comparison of the new SUMP with the existing plan: does the SUMP cover the following areas:

- **Strategic level vision:** short-term perspective without strategic vision of the traditional plans versus a long term/strategic vision of a SUMP
- **Geographic scope:** focus on practical city in the traditional plan versus the functional city concept in the SUMP
- **Level of public involvement:** limited input from local partners versus high citizen and stakeholder involvement
- **Types of measures:** proposed measures should balance social, environmental and economic development
- **Sector integration:** transport and infrastructure focus versus integration of practices and policies between policy sectors
- **Monitoring and evaluation:** no real monitoring and evaluation versus regular monitoring process focus on the achievement of measurable targets and outcomes
- **Finance:** limited financial plans and concepts versus clear financing schemes, inclusion of PPP schemes, etc.)
- **Implementation:** mainly led by city/infrastructure department versus high involvement of other policy levels, stakeholders and even industry

4. Evaluation of SUMP related activities

Development of a SUMP

Expected impacts

- **1st** level impact: change the **approach of planning transport** 'the way of doing things':
 - increased acceptance by all stakeholders
 - improved approach of planning transport
 - more effective governance structures
 - more effective transport measures (because based on better analysis and user-needs, better integrated, ...) with a higher impact
- **2nd** level of impact: change **travel behavior** in the city and related effects = impact of the measures defined in the SUMP
 - one general indicator MS ?
 - range of indicators describing the mobility status of the city ? E.g. SUMI

4. Evaluation of SUMP related activities

Development of a SUMP

Impact categories and indicators (1st level impacts)

- Society – governance
 - Indicators to describe the quality of the cooperation structures and planning approach
- Society – people
 - acceptance level for a sustainable mobility policy

Data collection

- interviews and questionnaires

CHALLENGE

SUMP Self-Assessment Tool

Questionnaire

This questionnaire is provided as a resource complementing the free, online version of the SUMP Self-Assessment Tool.

November 2015



THE CIVITAS INITIATIVE
IS CO-FINANCED BY THE
EUROPEAN UNION

Questionnaires

to review the existing transport plan or transport planning approach

to review the new SUMP and new planning approach



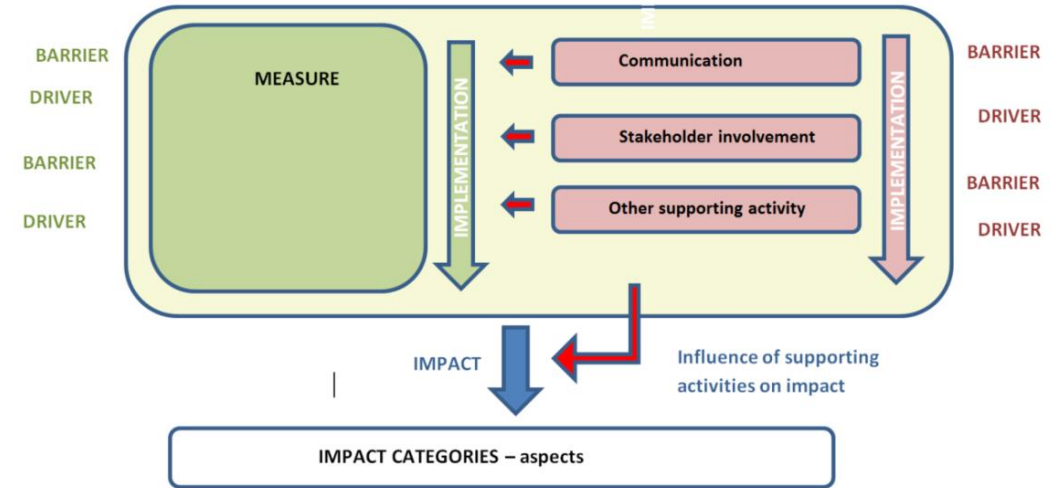
Survey on SUMP
planning status in the city

4. Evaluation of SUMP related activities

Development of a SUMP

Process evaluation

- Barriers and drivers in the development of a SUMP
- Effect of supporting activities e.g. awareness campaigns, citizens participation, stakeholder involvement



5. Short (temporary) conclusions

Evaluation of SUMP relates activities

- Process evaluation is crucial to optimise the implementation
- Importance of supporting activities
- Need for layered evaluation:
 - the SUMP as a process and a plan
 - the general impact of the implemented policy on the mobility status of the city as a result of the SUMP
 - the impact of the defined measures

further need for better structuring and methods

Learning from the experiences of the current SUMP oriented project to improve guidelines for other projects and cities.

**5th European Conference on
Sustainable Urban Mobility Plans**
14-15 MAY 2018 | NICOSIA, CYPRUS



Thank you!

Dirk Engels

dirk.engels@tmleuven.be

