

What is the role of Autonomous & Connected Transport in SUMPs?



COST ACTION CA16222

WISE-ACT

Wider Impacts and Scenario Evaluation of
Autonomous and Connected Transport



UNIVERSITY of
GREENWICH

Nikolas Thomopoulos – Siegfried Rupprecht

Outline



COST ACTION CA16222

WISE-ACT

Wider Impacts and Scenario Evaluation of
Autonomous and Connected Transport

COST Actions: European cooperation networks for a sustainable urban mobility

- ▶ Linking ACT with SUMP
- ▶ WISE-ACT objectives and activities
- ▶ Collaboration opportunities targeting sustainable mobility



Planning for multimodal cities



COST ACTION CA16222

WISE-ACT

Wider Impacts and Scenario Evaluation of
Autonomous and Connected Transport

SUMPs:

- ▶ aim to improve accessibility through sustainable transport
- ▶ incorporate short- / long-term plans
- ▶ assess current and future performance to develop scenarios
- ▶ foster balanced and integrated development of all modes integrate: Co-operation / Co-ordination / Consultation
- ▶ adopt a participatory approach
- ▶ Monitor / Review / Report
- ▶ need to ensure quality and validate compliance
- ▶ facilitate lesson learning



Planning for multimodal cities



COST ACTION CA16222

WISE-ACT

Wider Impacts and Scenario Evaluation of
Autonomous and Connected Transport

SUMPs:

- ▶ aim to improve accessibility through sustainable transport
- ▶ incorporate short- / long-term plans
- ▶ assess current and future performance to develop scenarios → WG5 survey
- ▶ foster balanced and integrated development of all modes → e.g. JRC (2017), Thomopoulos and Givoni (2015)
- ▶ integrate: Co-operation / Co-ordination / Consultation → WISE-ACT activities
- ▶ adopt a participatory approach → WISE-ACT workshop
- ▶ Monitor / Review / Report → WISE-ACT survey / scenarios
- ▶ need to ensure quality and validate compliance
- ▶ facilitate lesson learning





COST ACTION CA16222

WISE-ACT

Wider Impacts and Scenario Evaluation of
Autonomous and Connected Transport

WISE-ACT Objectives

Which are the wider impacts of Autonomous and Connected Transport and how can they be evaluated?

- ▶ Develop common terminology
- ▶ Co-ordinate trials and share know-how
- ▶ Compare simulation results and scenarios
- ▶ Identify and evaluate viable business models
- ▶ Evaluate user acceptability
- ▶ Release ACT Roadmap



WG5: WISE-ACT experts' views

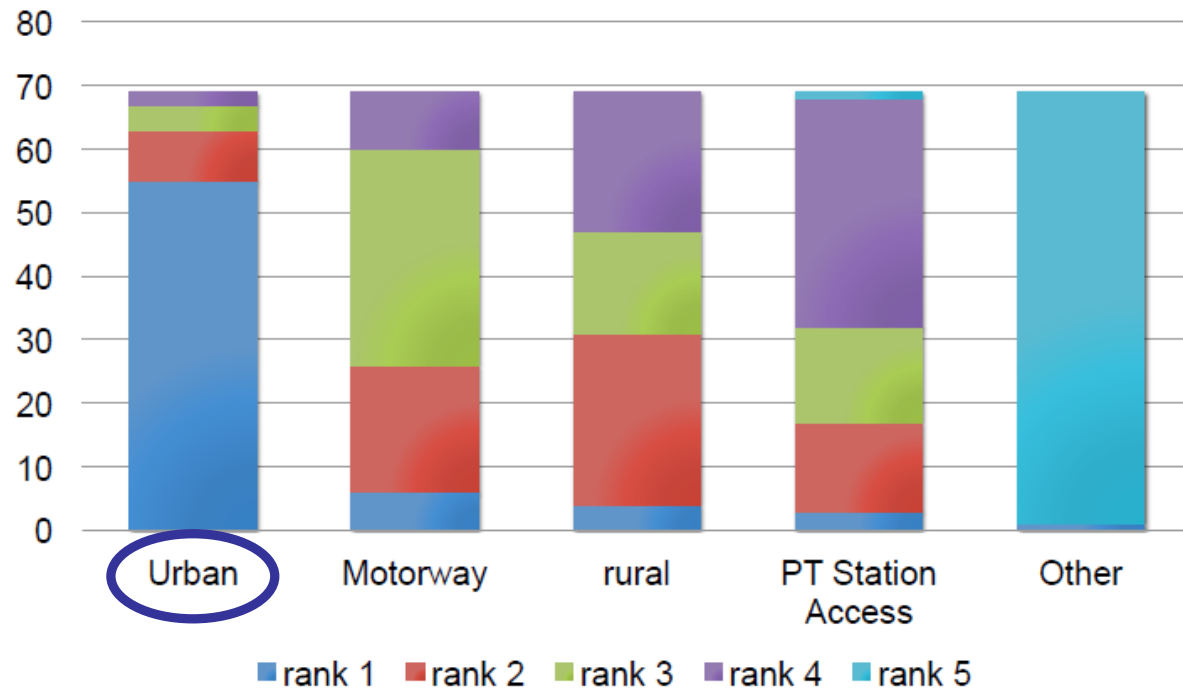


COST ACTION CA16222

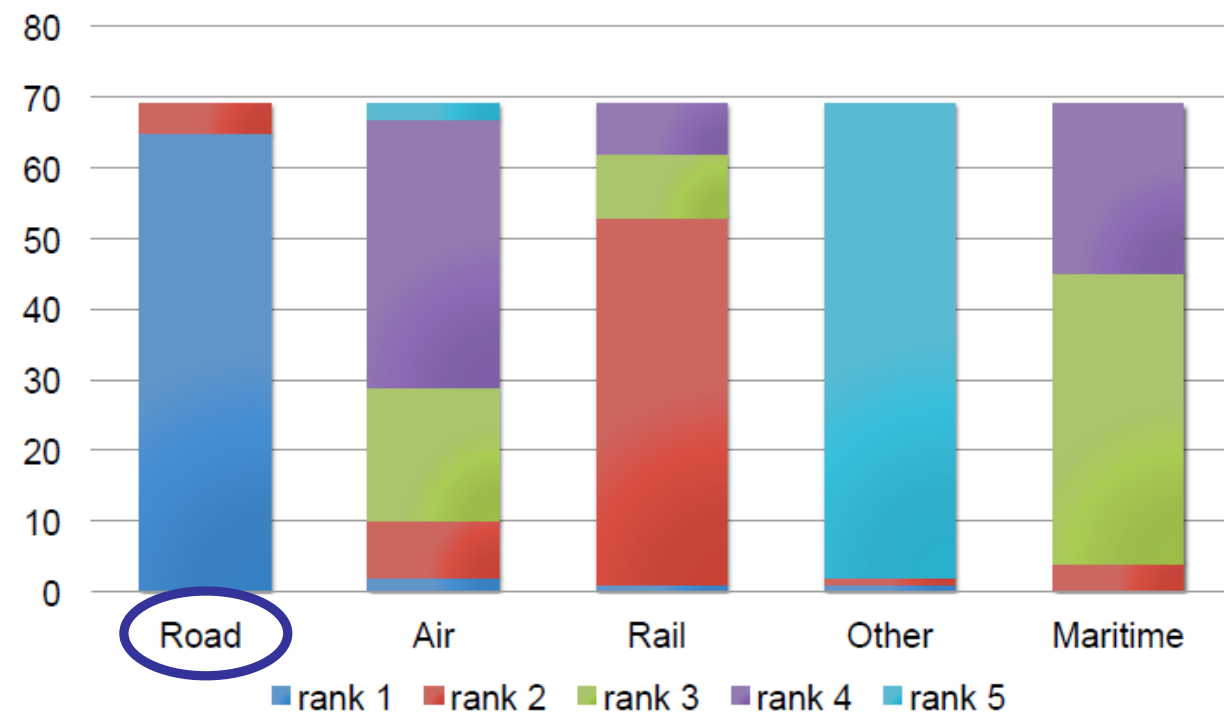
WISE-ACT

Wider Impacts and Scenario Evaluation of Autonomous and Connected Transport

Setting for Primary focus ACT scenario



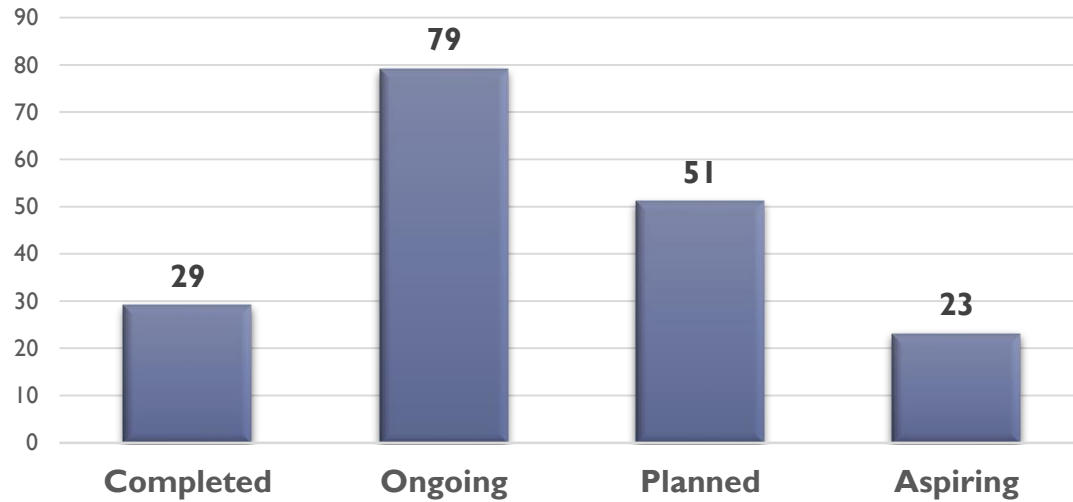
Transport Mode of primary focus Scenario



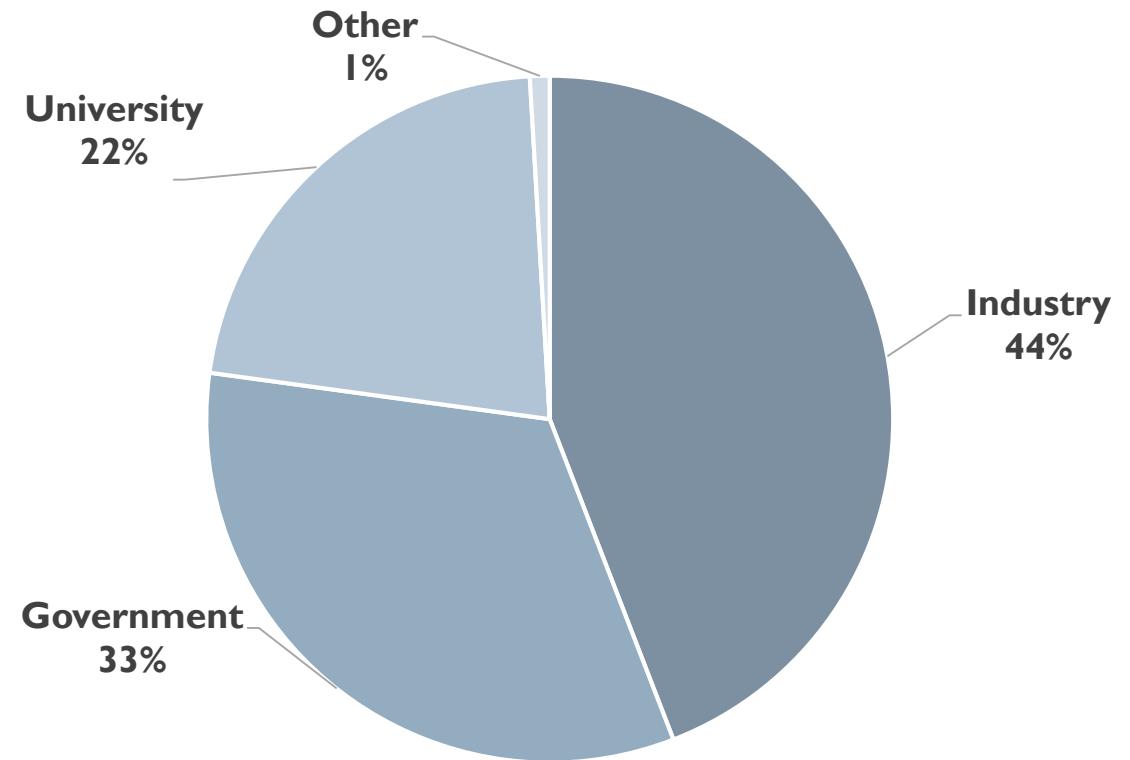


Analysis of AV trends I

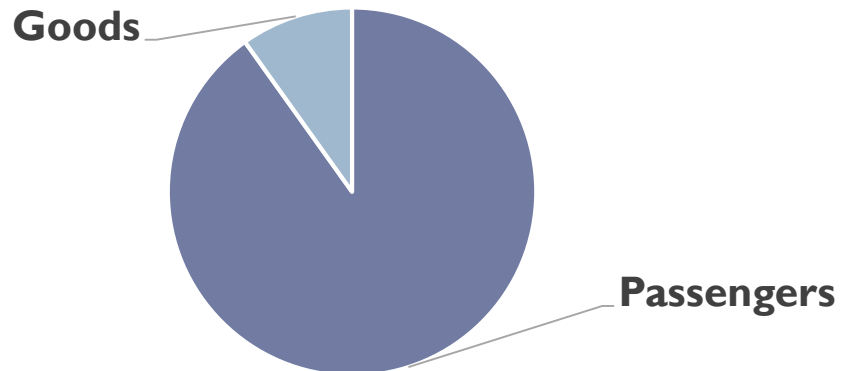
Project Status of AV Trials



Partners Involved



Passenger vs. Goods Transport



Collaboration Opportunities



COST ACTION CA16222

WISE-ACT

Wider Impacts and Scenario Evaluation of
Autonomous and Connected Transport

- ▶ Participate in our next workshop in Budapest
- ▶ Offer AV trials updates or suggestions
- ▶ Contribute to our ACT Glossary
- ▶ Complete one of our forthcoming surveys
- ▶ Conduct a STSM
- ▶ ...so join one of our forthcoming WISE-ACT activities!



Thank you

N.Thomopoulos@greenwich.ac.uk

on-line map loading . . .



COST ACTION CA16222

WISE-ACT

Wider Impacts and Scenario Evaluation of
Autonomous and Connected Transport



UNIVERSITY *of*
GREENWICH

