

The SUMP Learning Programme

Date: April 2017

Author: SUMPs-Up consortium

General information

The SUMP Learning Programme is a European programme comprising knowledge transfer, testing and assessment, and continuous user feedback collection with high quality content about concepts, approaches, tools, and methodologies for Sustainable Urban Mobility Plan (SUMP) development.

The programme aims to share SUMP good practice with transport planners and decision makers and help them to choose and make the best use of available resources in their local context. The information is tailored to small and mid-sized towns and larger cities with low SUMP take-up and high support needs.

The main characteristics of the SUMP Learning Programme are:

- Thematic approach
- European coverage
- Flexible framework
- Target group of 100 planning authorities (towns and cities) recruited through open Calls for the constitution of the Innovation Pilot Pool (IPP)
- A mix of online and face-to-face interactions: e-courses, webinars, workshops, peer-to-peer exchange and one-to-one expert support sessions
- Information provided in English
- Face-to-face interactions (workshops) organised in English and, where possible, local languages

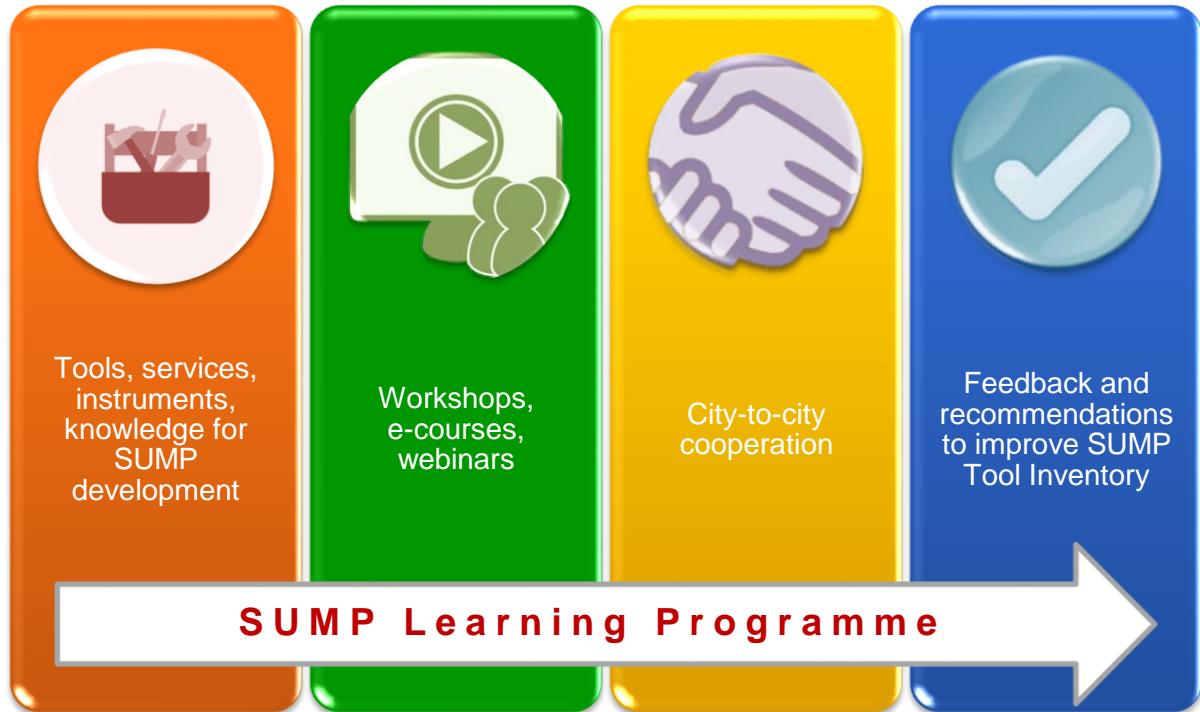
Participating cities will get familiar with SUMP tools presented through the Learning Programme, then test and assess the effectiveness and usefulness in their local context, and provide feedback and recommendations for improvement.

It is expected that the data arising from the IPP will be fed back into the SUMP Tool Inventory with the aim to improve tools and services for effective SUMP development and to encourage take-up in European cities and regions.

The SUMP Learning Programme

The SUMP Learning Programme (SLP) permeates the activities of the Innovation Pilot Pool of 100 planning authorities, by alternating learning activities, testing and a feedback phase.

Each SLP “class” is composed of EXPERT GROUP participants (15-20 cities per class) and LEADERSHIP GROUP participants (1 to 10 cities per class) with similar characteristics in terms of geography, size, current preconditions and/or challenges, SUMP experience levels, etc.



A team of transport planning professionals will be transferring information to cities about how to approach a SUMP and will be following closely all participants by means of a mix of online and face-to-face elements, called *blended learning*, lasting over six months:

- 3 webinars**
- 3 workshops**, linked to study visits and one-to-one expert support sessions
- 3 e-courses**
- 1 city-to-city review**
- 1 one-to-one expert support session**

After an **initial assessment of the SUMP development status in each city** by using the most convenient version of the SUMP ex-ante appraisal (self-assessment), each authority will be directed to the most appropriate tool(s) from the SUMP Tool Inventory that fit the current need(s) and will have the opportunity to test it locally.

The **test phase** involves an implementation component, which could be a feasibility or technical study, a measure, a campaign or a process-advancement element that contributes to the take-up of a SUMP in the respective city. Throughout the process, each authority will receive support from one SUMPs-Up city partner (acting as thematic expert) and one technical expert (acting as facilitator) from the SUMPs-Up consortium.

Planning authorities will have multiple opportunities to receive real-time feedback from experts during workshops, at one-to-one expert sessions or during peer-review process. The

peer-reviews and one-to-one expert sessions can be organised as workshops or as separate activity.

IPP members will at all times engage in interactively sharing knowledge and experience at workshops, webinars and in the discussions on lessons learned.

Overview of the SLP thematic topics and timeline

The overall SUMP Learning Programme will run between September 2017 – September 2019, and is structured in 5 SLP classes covering a thematic topic:

SLP nr.	Topic
SLP 1	Tools and services for initiating a SUMP
SLP 2	Tools and services for initiating a SUMP tailor-made for small and medium-sized cities
SLP 3	Tools and services for elaborating the SUMP ¹
SLP 4	Tools and services for elaborating the SUMP
SLP 5	Tools and services for SUMP implementation

Overview of the entire SLP and timeline (draft version as of April 2017):

SLP nr.	Timeline	Key topic	Subtopics
SLP 1	Autumn 2017 – Feb 2018	Tools and services for initiating a SUMP	<ul style="list-style-type: none"> • Assessment of resources and potential • Starting a SUMP process • Project and resource management • Fitting in the given national framework • Analysis of the mobility situation and data availability • Identify and engage stakeholders and citizens • Develop a common vision of mobility, set goals and strategic objectives • Identify the priorities • Quick-win solutions
SLP 2	Dec 2017 – May 2018	Tools and services for initiating a SUMP tailor-made for small and medium size cities	<ul style="list-style-type: none"> • Assessment of resources and potential • Starting a SUMP process • Institutional cooperation with neighbouring municipalities • The regional approach on SUMP • Project and resource management • Fit in the given national framework • Analysis of the mobility situation and data availability • Identify and engage stakeholders and citizens

¹ Two SLP classes (SLP 3 and SLP 4) will be dedicated to transferring knowledge about the overarching topic of SUMP development due to the high interest on the subject expressed by cities around Europe.

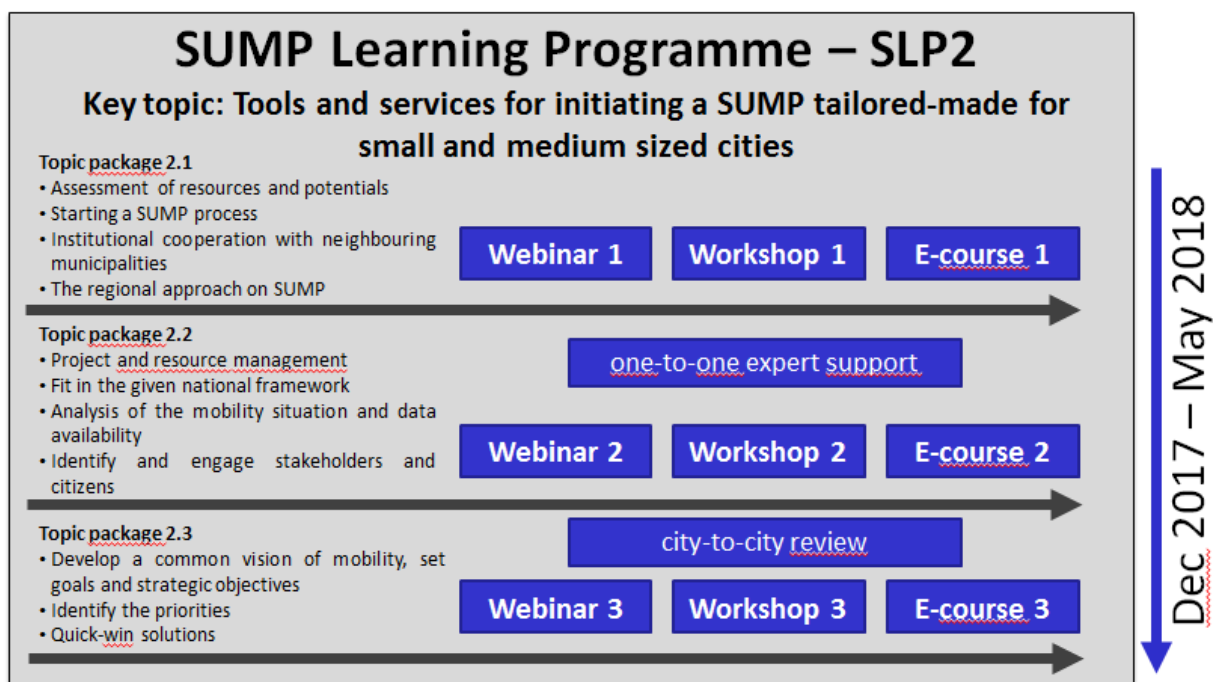
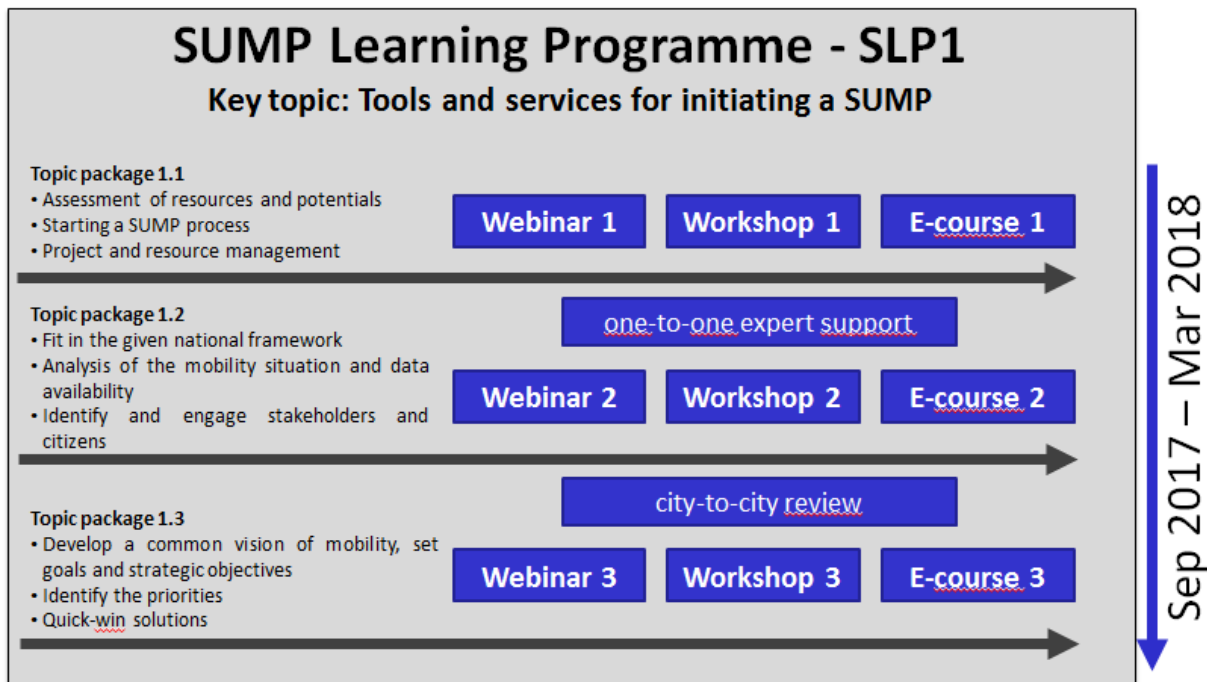
			<ul style="list-style-type: none"> • Develop a common vision of mobility, set goals and strategic objectives • Identify the priorities • Quick-win solutions
SLP 3	May 2018 – Nov 2018	Tools and services for elaborating the SUMP	<ul style="list-style-type: none"> • Upgrading a transport plan into a SUMP • Scenarios and appraisal of measures from different policy fields • Financing, procurement and legal aspects • New and innovative measures • The SUMP adoption • The SUMP Action Plan • Monitoring and Evaluation Plan • <i>Other specific topics in SLP3 and SLP4 will be defined upon the feedback received in SLP 1 and SLP 2</i>
SLP 4	Oct 2018 – Mar 2019	Tools and services for elaborating the SUMP	<ul style="list-style-type: none"> • Upgrading a transport plan into a SUMP • Scenarios and appraisal of measures from different policy fields • Financing, procurement and legal aspects • New and innovative measures • The SUMP adoption • The SUMP Action Plan • Monitoring and Evaluation Plan • <i>Other specific topics in SLP3 and SLP4 will be defined upon the feedback received in SLP 1 and SLP 2</i>
SLP 5	Mar 2019 – Sep 2019	Tools and services for SUMP implementation	<ul style="list-style-type: none"> • Planning and management of measure implementation • Monitoring and Evaluation Plan • Impact assessment • Identify new challenges • <i>Other specific topics in SLP 5 will be defined upon the feedback received in SLP 1-4</i>

SLP 1 and SLP 2

SLP 1 and SLP 2 classes will be composed each of 20 EXPERT GROUP planning authorities, and up to 10 LEADERSHIP GROUP planning authorities.

SLP 1 will kick off in Autumn 2017 with a kick-off meeting organised in Thessaloniki (Greece), and SLP 2 will start in December 2017.

Overview of the structure and timeline of SLP 1 and SLP 2 (draft version as of April 2017):



More details related to eligibility and application to the IPP, funding and the financial procedures are provided in the IPP Terms of Reference and the 1st IPP Call for Applications text.

For any questions related to the SUMP Learning Programme, please contact Ana-Maria Baston, a.baston@rupprecht-consult.eu. For any questions related to application and funding procedures, please contact the SUMPs-Up IPP Helpdesk c/o Polis, helpdesk@sumps-up.eu.